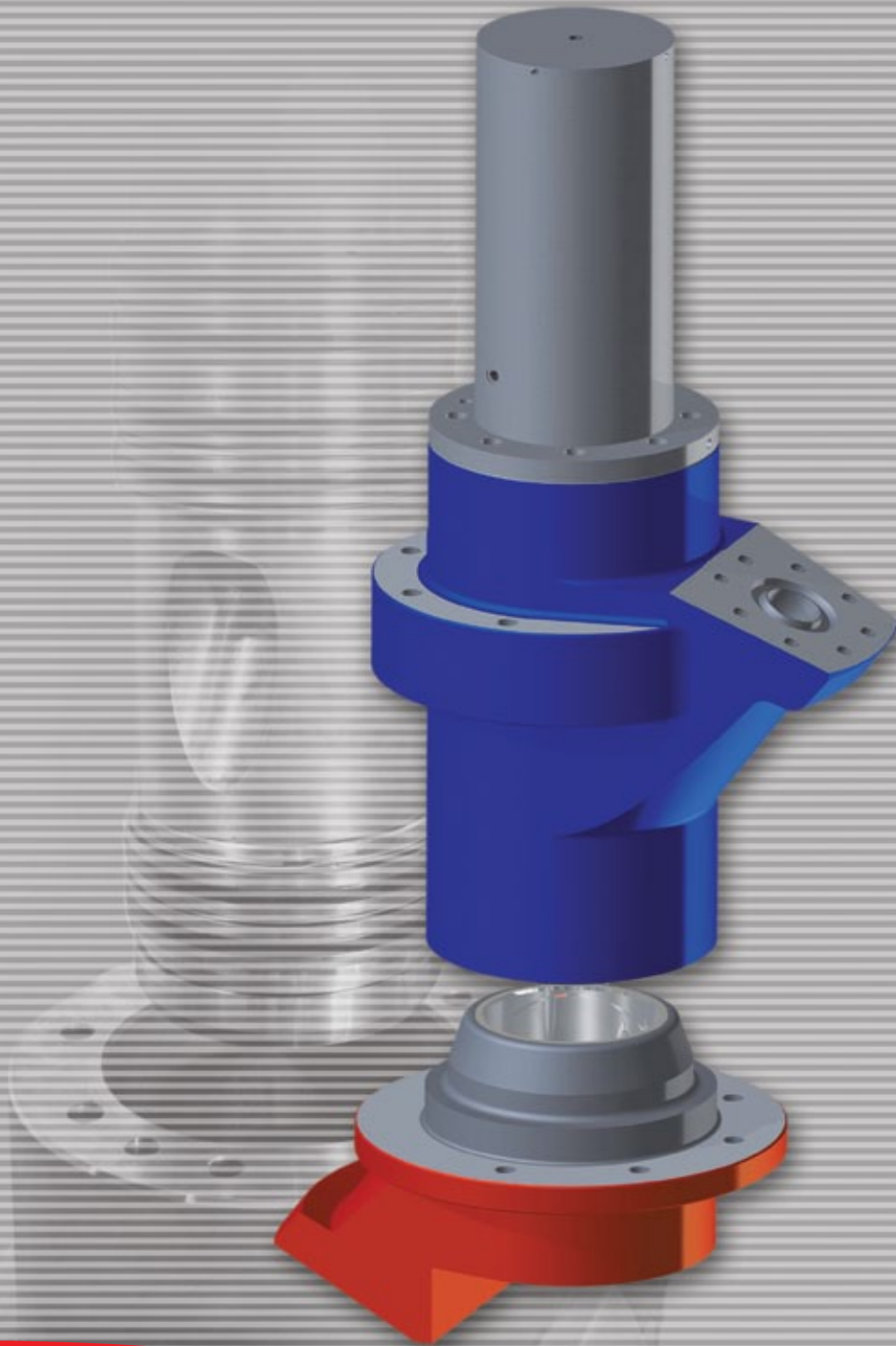




CHOKE & KILL



WE SOLVE DEEPWATER PROBLEMS

Radoil, Inc. offers a combination of full manufacturing and project engineering. Our blend of experience and capability prove the “fast-track performance” and “quality results” are not mutually exclusive.

www.radoil.com

RADOIL, INC
12251 FM 529
Houston, TX 77041
ISO 9001:2008

CHOKE & KILL

Our 10,000 p.s.i. **Choke and Kill Connector** is pressure balanced and provides a full bore connection for deepwater choke and kill lines.

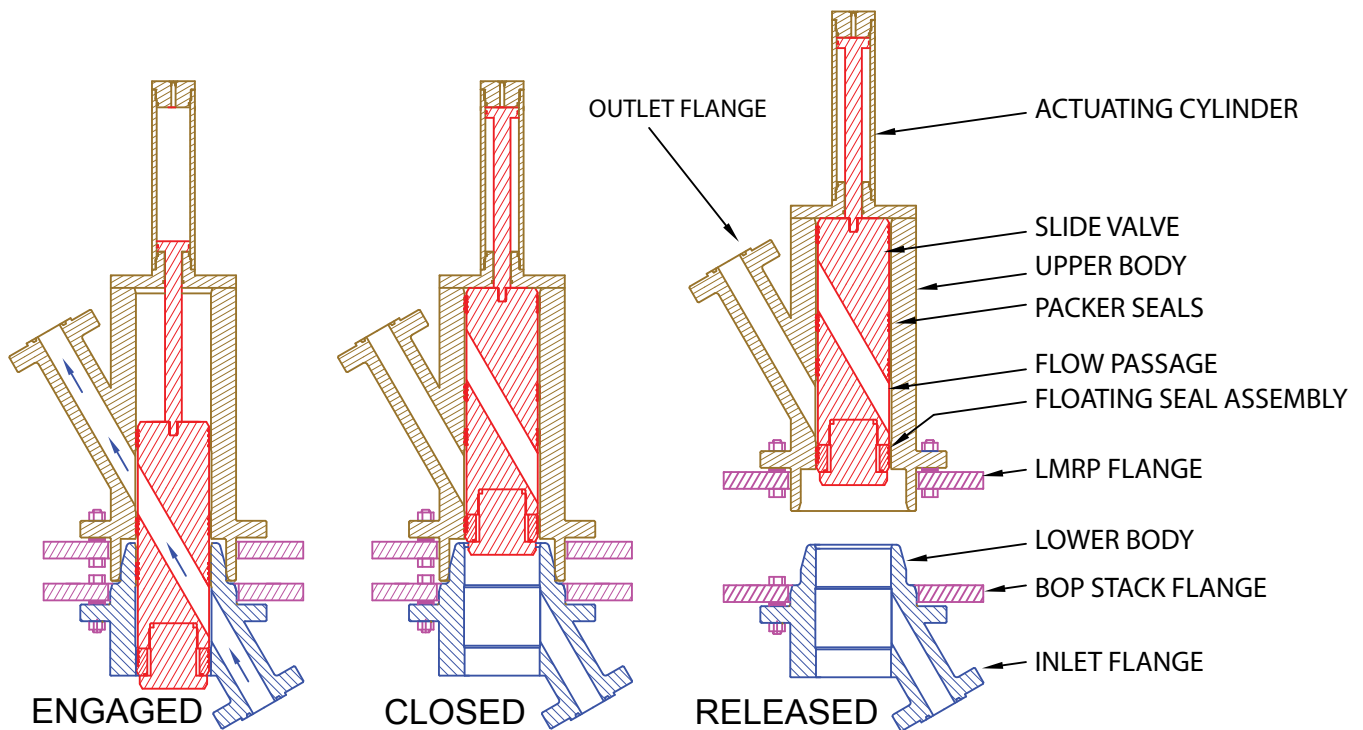
Due to our pressure balanced design Radoil's Choke and Kill Connector does not require a locking connection and avoids the high forces of conventional connectors. In the disengaged position the slide valve provides a seal for the upper choke and kill lines thus saving any fluid retained in the lines.

Because there is no locking connection between the upper and lower bodies the connector can easily be separated in emergency LMRP recovery situations even if the valve remains engaged (however the seal for the upper choke and kill lines may be compromised). The interface contact surface between the upper and lower bodies is designed so that the two sections can be coupled or uncoupled even when the alignment angle is a little off.



Features included:

- * Pressure balanced
- * Provides full-bore path for c&k lines
- * No locking connection
- * Slide valve seals upper C&K lines during retrieval



patents and patents pending

Radoil, Inc.

12251 FM 529
Houston, TX 77041
Phone:713-937-4494
Fax:713-937-4624

At Radoil, products are based upon technology aimed at providing you with enhanced quality and reliability. When service is needed, our customer support engineers will provide efficient and responsive support.